



# GBP3 Polyclonal Antibody

<b>Catalog No</b>	YP-Ab-16160
<b>Isotype</b>	IgG
<b>Reactivity</b>	Human;Rat;Mouse;
<b>Applications</b>	WB;IHC;IF;ELISA
<b>Gene Name</b>	GBP3
<b>Protein Name</b>	Guanylate-binding protein 3
<b>Immunogen</b>	The antiserum was produced against synthesized peptide derived from human GBP3. AA range:481-530
<b>Specificity</b>	GBP3 Polyclonal Antibody detects endogenous levels of GBP3 protein.
<b>Formulation</b>	Liquid in PBS containing 50% glycerol, 0.5% BSA and 0.02% sodium azide.
<b>Source</b>	Polyclonal, Rabbit,IgG
<b>Purification</b>	The antibody was affinity-purified from rabbit antiserum by affinity-chromatography using epitope-specific immunogen.
<b>Dilution</b>	WB: 1/500 - 1/2000. IHC: 1/100 - 1/300. ELISA: 1/10000.. IF 1:50-200
<b>Concentration</b>	1 mg/ml
<b>Purity</b>	≥90%
<b>Storage Stability</b>	-20°C/1 year
<b>Synonyms</b>	GBP3; Guanylate-binding protein 3; GTP-binding protein 3; GBP-3; Guanine nucleotide-binding protein 3
<b>Observed Band</b>	64kD
<b>Cell Pathway</b>	Cytoplasm . Cytoplasm, perinuclear region . Golgi apparatus membrane . Heterodimers with GBP1, GBP2 and GBP5 localize in the compartment of the prenylated GBPs: with GBP1 in a vesicle-like compartment, with GBP2, around the nucleus and with GBP-5, at the Golgi apparatus. .
<b>Tissue Specificity</b>	Brain,Prostate,
<b>Function</b>	function:Binds GTP, GDP and GMP.,sequence caution:Contaminating sequence. Potential poly-A sequence.,sequence caution:Unlikely isoform. Aberrant splice sites.,similarity:Belongs to the GBP family.,
<b>Background</b>	This gene encodes a member of the guanylate-binding protein (GBP) family. GBPs specifically bind guanine nucleotides (GMP, GDP, and GTP) and contain two of the three consensus motifs found in typical GTP-binding proteins. The encoded protein interacts with a member of the germinal center kinase family. Multiple transcript variants encoding different isoforms have been found for this gene. [provided by RefSeq, Jan 2016],



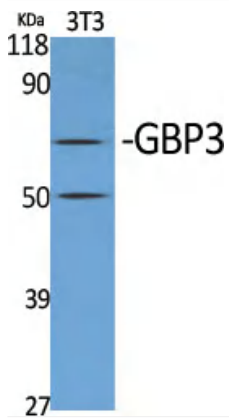
**matters needing attention**

Avoid repeated freezing and thawing!

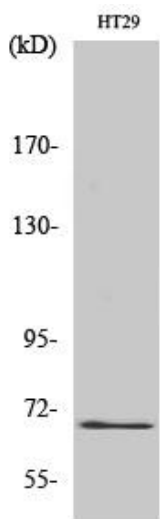
**Usage suggestions**

This product can be used in immunological reaction related experiments. For more information, please consult technical personnel.

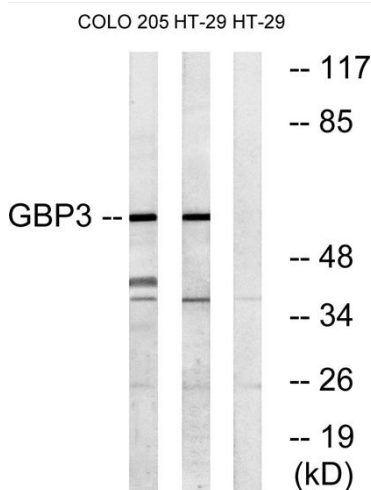
**Products Images**



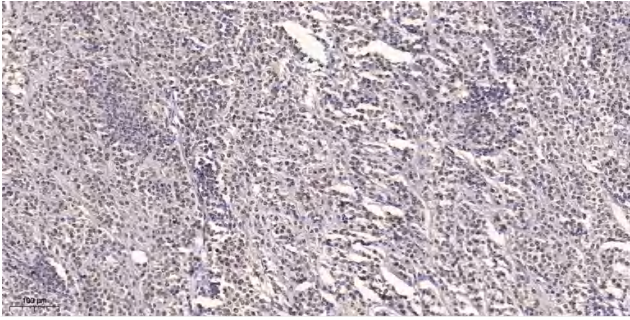
Western Blot analysis of various cells using GBP3 Polyclonal Antibody



Western Blot analysis of COLO205 cells using GBP3 Polyclonal Antibody



Western blot analysis of lysates from HT-29 and COLO cells, using GBP3 Antibody. The lane on the right is blocked with the synthesized peptide.



Immunohistochemical analysis of paraffin-embedded human small intestinal carcinoma tissue. 1,primary Antibody was diluted at 1:200(4° overnight). 2, Sodium citrate pH 6.0 was used for antigen retrieval(>98° C,20min). 3,Secondary antibody was diluted at 1:200